

Chapter 13

Specifications

1. Dimensions

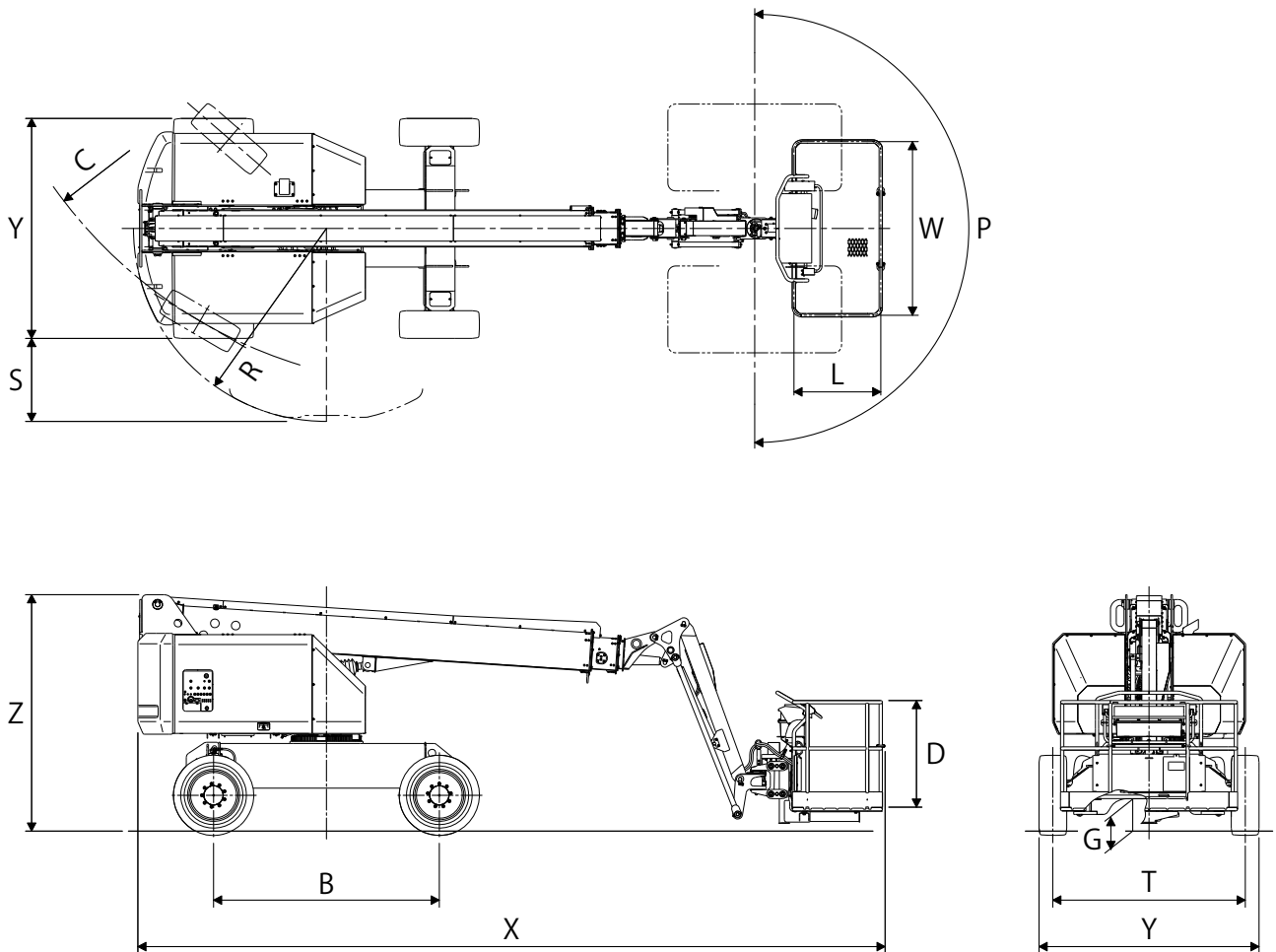


Fig. 13-1

M199712-1

- X Overall Length
- Y Overall Width
- Z Overall Height
- R Turntable Tail Swing Radius
- S Turntable Tail Swing
- G Ground Clearance
- B Wheelbase
- T Tread (Front, Rear)
- L Platform Inner Length (Pipe Center)
- W Platform Inner Width (Pipe Center)
- D Platform Inner Depth (Pipe Center)
- P Platform Rotation
- C Minimum Turning Radius (Center of Outside Wheel)

2. General Specifications

Model		SP14DJ	
Performance	Platform Height Maximum	13.9 m	
	Horizontal Outreach Maximum	12.6 m	
	Platform Load Capacity (Evenly Distributed)	270 kg or 2 persons	
	Platform Rotation	[P] 90° CW to 90° CCW (180°)	
	Turntable Rotation	360° (Continuous)	
	Max. Allowable Tilt Angle	5°	
	Gradeability (Stowed)*1 *2	47% (25°)	
	Max. Allowable Manual Side Force	400 N (41 kg)	
	Min. Turning Radius (Center of Outside Wheel)	[C] 5.000 m	
	Max. Allowable Wind Speed	12.5 m/s	
Measurements	Overall Length	[X] 7.745 m	
	Overall Width	[Y] 2.300 m	
	Overall Height	[Z] 2.450 m	
	Turntable Tail Swing Radius	[R] 2.000 m	
	Turntable Tail Swing	[S] 0.850 m	
	Inside Diameter of Platform	[LWD] 0.9 x 1.8 x 1.1 m	
	Wheel Base	[B] 2.340 m	
	Tread	[T] 2.000 m	
	Tires	33x12-20 SOLID	
	Ground Clearance	[G] 0.330 mm	
Weight*3	Gross Weight	8 450 kg	
	Max. Tire Loading Force	4 260 kg	
	Max. Tire Ground Contact Pressure (POSITIVE)	1 225 kPa (735 Overall)	
Power source	Engine	YANMAR 4TNV88-KASV	
	Auxiliary Power Unit	12V-DC	
	Fuel Type	Diesel Fuel	
	Fuel Tank Capacity	120 L	
	Recommended Hydraulic Oil	Shell Tellus S2 M 22	
	Hydraulic Tank Capacity	190 L	
Function speed*1	Elevation	Up	-15 – 70° / 39 – 51 s
		Down	-15 – 70° / 39 – 51 s
	Telescope	Out	5.77 m / 24 – 36 s
		In	5.77 m / 19 – 31 s
	Turntable Rotation (Stowed)		0.5 rpm (360° / 120 – 130 s)
	Jib Elevation	Up	-70 – 60° / 20 – 30 s
		Down	-70 – 60° / 15 – 25 s
	Platform Rotation		180° / 10 – 20 s
Max. Travel Speed*2 (Level Surface)	Stowed	7.2 km/h	
	Elevated	1.2 km/h	

• The machine is designed for both indoor and outdoor use.

• Advisable atmospheric temperature range: -20°C to 40°C.

*1 Function speeds and gradeability assume that 1 person is on the machine.

*2 Travel speed and gradeability depend on adequate traction and the conditions of the traveling surface.

*3 Weight informations are approximate and do not incorporate different option configurations.

3. Work Range Diagram

3-1 SP14D1JM

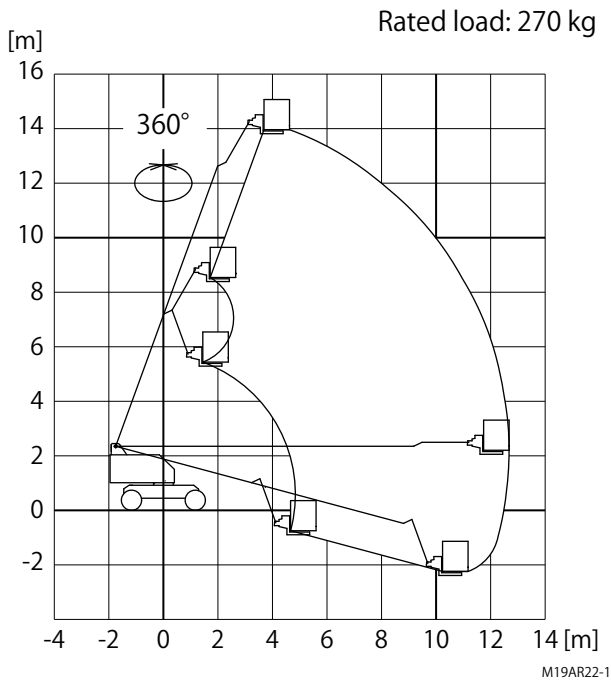


Fig. 13-2

1. The boom deflection is not taken into account in the above working range diagram.
2. The working range is the same in any boom-rotated directions.
3. The working range is a reference measured on a firm level surface.
4. The counter weight should be attached to the specified point.
5. Platform rated load may differ depending on option configurations.

4. Supplementary Information

The following information is provided as supplementary information for the machine.

- The guaranteed Sound Power Level (LWA), tested according to Annex III, Part B, No 1 of the European Directive 2000/14/EC "Noise emission in the environment by equipment for use outdoors", is 104 dB.
- The vibration total value to which the hand-arm system is subjected does not exceed 2.5 m/s^2 .
- The highest root mean square value of weighted acceleration to which the whole body is subjected is 0.61 m/s^2 .