

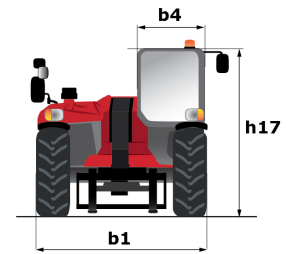
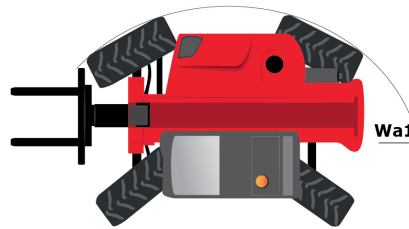
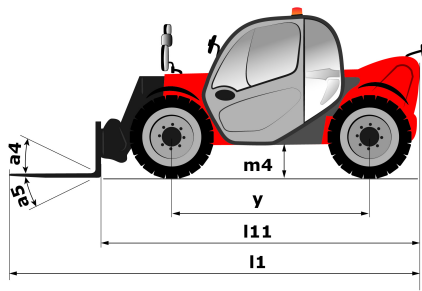
Technical sheet :

MT 730 H

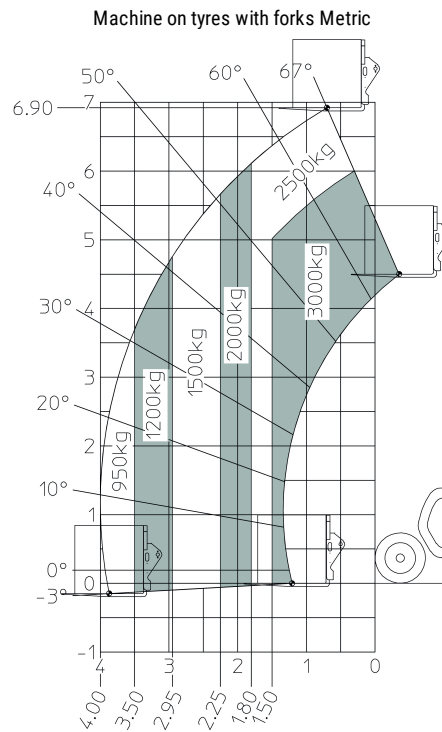


| Capacities | | Metric |
|---|-----------|--------------------------------|
| Max. capacity | | 3000 kg |
| Max. lifting height | | 6.90 m |
| Max. Reach | | 4 m |
| Weight and dimensions | | |
| Overall length to carriage | l11 | 4.67 m |
| Overall length (with forks) | l1 | 5.77 m |
| Overall width | b1 | 1.99 m |
| Overall height | h17 | 1.99 m |
| Wheelbase | y | 2.69 m |
| Ground clearance | m4 | 0.34 m |
| Overall cab width | b4 | 0.79 m |
| Tilt-up angle | a4 | 11 ° |
| Tilt-down angle | a5 | 116 ° |
| External turning radius (over tyres) | Wa1 | 3.33 m |
| Unladen weight (with forks) | | 5880 kg |
| Standard tyres | | ALLIANCE 380/75 R20 148A8 A580 |
| Forks length / width / section | l / e / s | 1070 mm x 100 mm / 50 mm |
| Performances | | |
| Lifting | | 9.42 s |
| Lowering | | 7.53 s |
| Extension | | 7.43 s |
| Retraction | | 9.36 s |
| Crowd | | 3.21 s |
| Dump | | 2.15 s |
| Engine | | |
| Engine brand | | Kubota |
| Engine nom | | Stage V |
| Engine model | | V3307-CR-TE5B |
| Number of cylinders / Capacity of cylinders | | 4 - 3331 cm ³ |
| I.C. Engine power rating - Power (kW) | | 75 Hp / 54.60 kW |
| Max. torque / Engine rotation | | 265 Nm @ 1400 rpm |
| Drawbar pull (Laden) | | 3860 daN |
| Transmission | | |
| Transmission type | | Hydrostatic |
| Number of gears (forward / reverse) | | 2 / 2 |
| Max. travel speed | | 24.90 km/h |
| Service brake | | Hydraulic |
| Hydraulics | | |
| Hydraulic pump type | | Gear pump |
| Hydraulic flow / Pressure | | 88 l/min / 245 Bar |
| Tank capacities | | |
| Engine oil | | 11 l |
| Hydraulic oil | | 115 l |
| Fuel tank | | 90 l |
| Noise and vibration | | |
| Noise at driving position (LpA) | | 74 dB(A) |
| Noise to environment (LwA) | | 103 dB(A) |
| Vibration on hands/arms | | < 2.50 m/s ² |
| Miscellaneous | | |
| Steering wheels (front / rear) | | 4 / 4 |
| Safety cab homologation | | ROPS - FOPS cab (level 2) |

Dimensional drawing



Load chart





Siège Social

430 rue de l'Aubinière - 44150 Ancenis Cedex - France

Tel: +33(0)2 40 09 10 11 - Fax: +33 (0)2 40 09 10 97

www.manitou.com



This brochure describes versions and configuration options for Manitou products which may be fitted with different equipment. The equipment described in this brochure may be standard, optional or not available depending on version. Manitou reserves the right to change the specifications shown and described at any time and without prior warning. The manufacturer is not liable for the specifications given. For more information, contact your Manitou dealer. Non-contractual document. Product descriptions may differ from actual products. List of specifications is not comprehensive. The logos and visual identity of the company are the property of Manitou and may not be used without authorisation. All rights reserved. The photos and diagrams contained in this brochure are provided for information only.

MANITOU BF SA - Limited company with board of directors - Share capital: 39,668,399 euros - 857 802 508 RCS Nantes