

RANGE **MI**  
IC masted forklift trucks



# Handling your world

Founded over 60 years ago by the Braud family, the Manitou Group now operates worldwide. A world-leader in all-terrain material handling, the Group designs, manufactures, distributes and services equipment for construction, agriculture and industries.

The Group's product ranges include: telescopic loaders including rotary and heavy-load telehandlers; all-terrain, semi-industrial and industrial masted forklift trucks; wheel or track skid-steer loaders; access platforms; truck-mounted forklifts; warehousing equipment; and attachments.

Through its iconic brands, Manitou, Gehl and Mustang, and its worldwide network of 1,400 dealers, the Group offers the best solutions to create optimum value for its customers.

Headquartered in France, the Group registered a revenue in 2015 of 1.287 billion euros in 140 countries and employs 3.214 people, all strongly focused on satisfying customers.



1958

First Manitou forklift truck created based on an idea from Marcel Braud.

1972

Group's global expansion began.

Sales & marketing partnership agreement signed with Toyota for the exclusive distribution of Toyota industrial forklifts in France.

1981

Manitou's first telehandler launched.

1984

The company went public.

1993

First MRT rotating telescopic forklifts were launched.

1995

Aerial workplatforms launched.

1996

Manitou was ISO-9001-certified for the first time.

1998

Marcel Braud appointed Chairman of the Supervisory Board.

2006

Manitou surpassed the 1 billion euro sales mark.

## 3 BRANDS

distributed by  
1 400 dealers  
in 140 countries

**MANITOU** | **GEHL** | **MUSTANG**

- 21 subsidiaries
- 9 production facilities
- 3.214 employees worldwide
- 65% of the share capital held by the founding families
- 78% of revenue comes from foreign markets
- Revenue of 1.287 billion euros in 2015

2007

Manitou inaugurated a 22,000 m<sup>2</sup> international logistics center.

2008

The American Gehl Company was acquired.

2009

Governance changed and the company went back to having a Board of directors.

2010

Gehl and Mustang articulated loaders launched.

2011

Family shareholding reorganized.

2012

Crossover agreement signed with the company Yanmar for the manufacturing and distribution of compact excavators.

2013

Partnership with Yanmar made stronger with Yanmar taking a 6,26%-stake in the Group's capital.

2014

January: Michel Denis appointed as President and CEO.  
April: new roadmap hinged in the three divisions, including one for service.

2015

Celebration of the 500,000th machine sold in the world.







## **Manitou Industry (MI) masted forklift trucks**

Perfectly representing Manitou's involvement in industrial markets, the MI trucks have been designed around user expectations such as simplicity, comfort, reliability, and efficiency, all at the lowest operational cost.

**Manitou mallisto**  
**joka vastaavat tarpeitasi**



Kääntöympyrä

**1985 mm**

Aina

**6,5 m**

Nostokorkeuteen

Nostokyky

**1,5-10  
TÖNNIA**

## Strong machines

Our trucks are equipped with monobloc chassis, and have strengthened masts and axles. The Okamura transmission (small and medium tonnage units) optimizes the efficiency of the various engines. The Powershift transmission in the MI large tonnage units has been developed specifically for heavy duty applications.

The machines are fitted as standard with an air filter consisting of a primary filter and a security cartridge and are designed to resist corrosion and vibration. That means increased longevity and filtering capacity. For the toughest applications, a self-cleaning cyclonic pre-filter is available.





## High performance engine

Manitou has chosen Yanmar Premium Diesel and Nissan LPG engines for its MI 1.5 to 3.5 ton trucks.

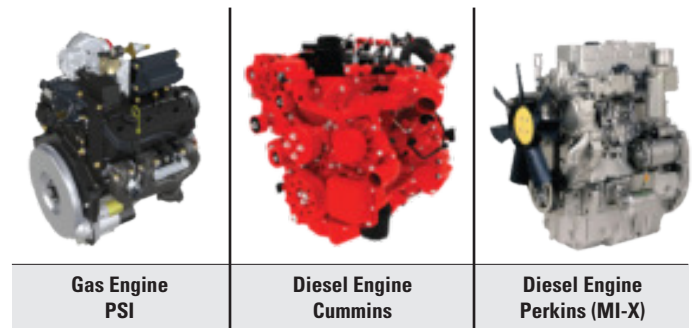
They come with:

- high-level air intake,
- air filter safety cartridge,
- diesel fuel/water separator pre-filter.



The combination of a powerful and clean engine (which meets stage IIIb/tier IV final international standards) and recyclable materials helps reduce the impact your machine has on the environment throughout its service life.

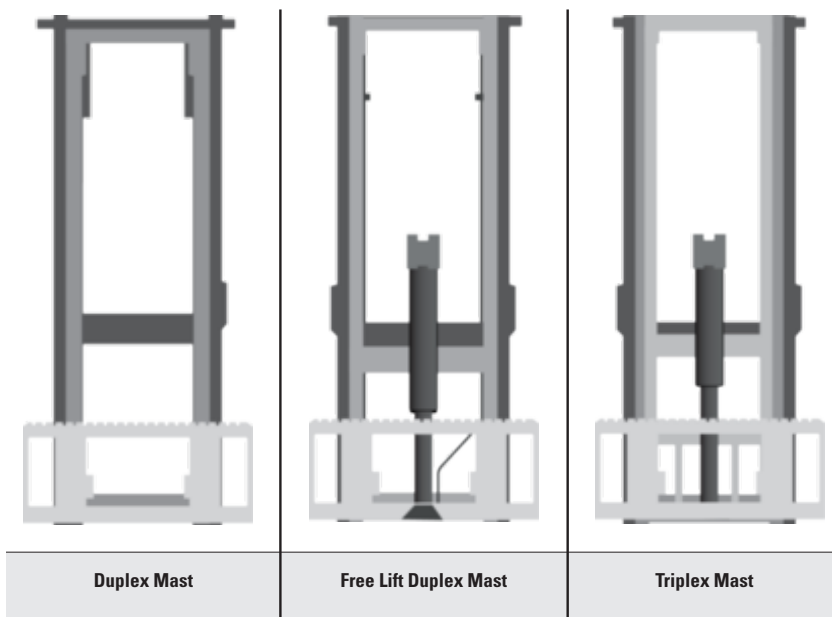
The MI range maintains significant travel and elevation speeds without increasing fuel consumption.



MI medium tonnage units are fitted with PSI engines for MI Gas machines, Cummins (turbo) engines for IIIB versions, and Perkins engines for MI-X Diesel versions. These engines provide performance and durability whilst maintaining torque converter power.

The engines which equip the MI heavy tonnage range have been chosen and adapted by Manitou to meet the high performance levels expected both in terms of power and environmental constraints, as well as the various standards in force (sound level, pollution etc.).





## Mast types

To meet your height requirements, the MI range offers a number of mast options:

### Duplex

Two mast sections one fixed, one sliding. The sliding section is activated when the operator uses the hydraulic lever.

### Free lift duplex

The central cylinder gives the operator greater free lift without having to raise the mast.

### Triplex free lift

The central cylinder gives the operator greater free lift without having to raise the mast. The mast consists of three sections, which allow for a low overall height while maintaining a significant working height.

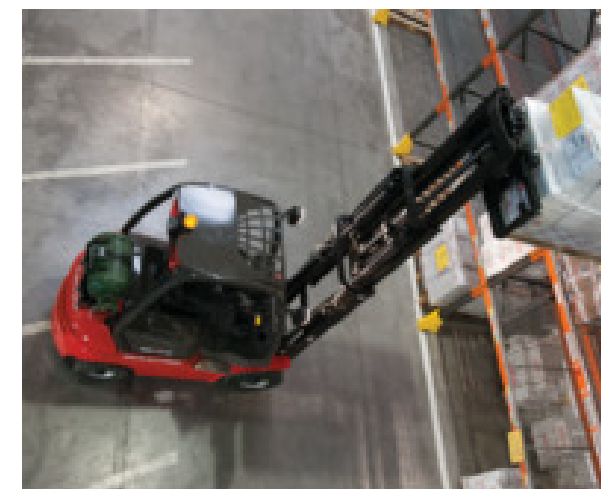
We can also fulfill your specific requirements: please contact your nearest dealership.

## Easy-to-use and maintain machines

Reducing machine downtime is a key factor in reducing costs, and the MI range meets this requirement with its ease of maintenance.

Simplicity of design (a limited number of electronic parts) helps keep maintenance costs down.

Easy access to components under the engine hood. The main electronic components are positioned in sealed casings protected from dust and moisture.





## Easy access

Across our whole product range, one of Manitou's concerns is the safety and comfort of the user during the often repetitive activities of getting in and out of the driver's cab.

Regardless of body shape, users can easily access the driver's cab from both sides thanks to:

- the fixed handles on the front left side of the overhead guard,
- the wide anti-slip steps located on both sides,
- the large open space on the platform.





## **Visibility & safety**

The safety of the driver and the surrounding environment relies first and foremost on visibility. The machine has been designed with this priority in mind:

- Mast: optimized hose routing for better vision between the uprights,
- Overhead guard with honeycomb roof ensuring excellent upward visibility,
- Streamlined back uprights,
- Operator presence sensor, which secures use by locking the hydraulic movements of the mast and the forward/backward movement of the machine (standard ISO 3691),
- Panoramic interior rear-view mirror (as standard).



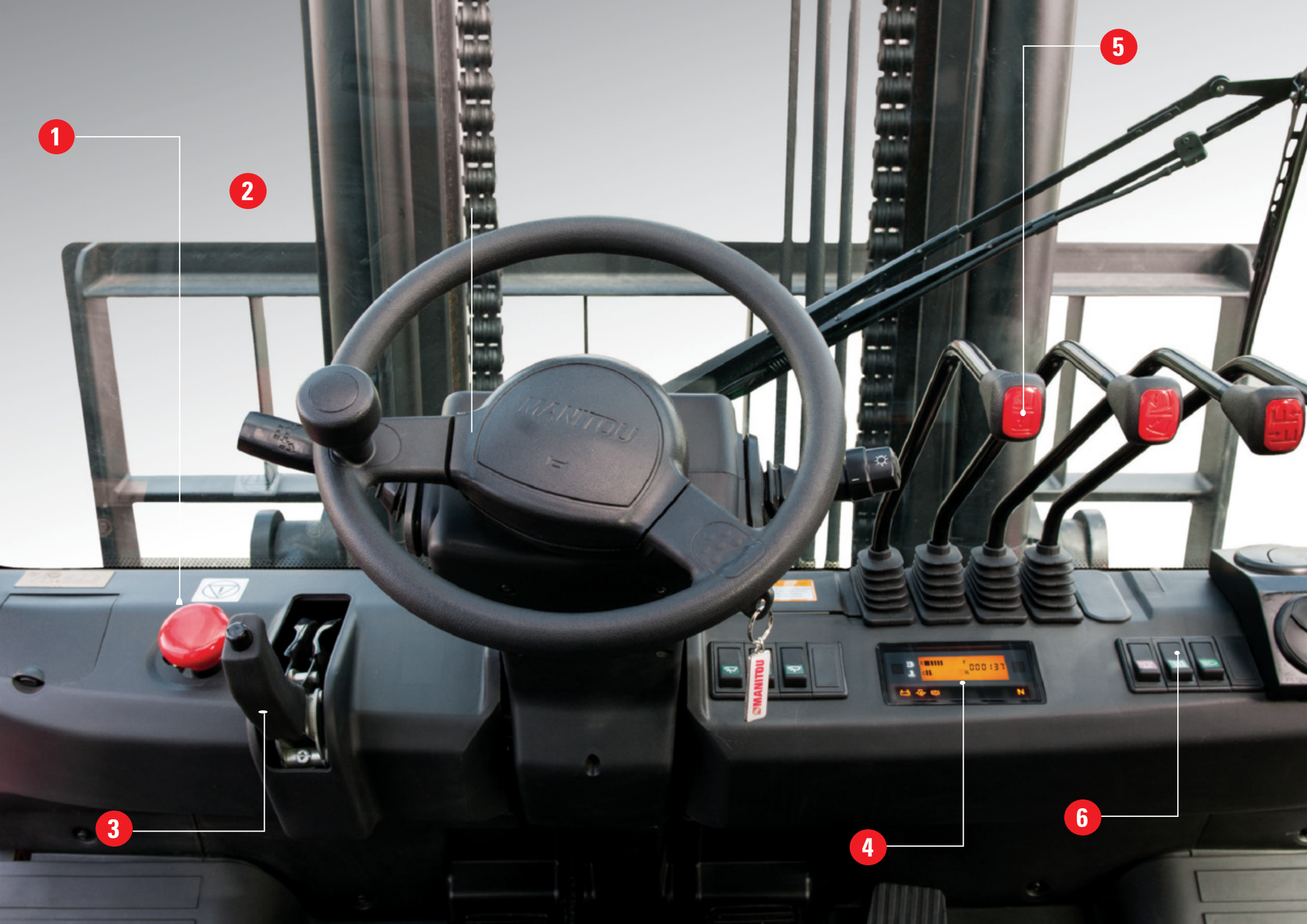
## User comfort

The spacious and comfortable driver's cab provides the operator with outstanding driving comfort, making work less tiring and improving productivity.

- Adjustable suspension seat,
- Safety belt (standard),
- Adjustable steering column,
- Vibration absorption systems,
- Systems enabling the smooth lowering of the forks at the end, and reducing jolting and noise when deploying the mast,
- Different types of cab and a wide of options available.



- Emergency stop mechanism **1**
- FNR (forward/neutral/reverse) operating lever **2**
- Parking brake **3**
- Display **4**
- Hydraulic levers **5**  
(extending/retracting, tilting mast)
- Control switches (headlights, etc.) **6**



1

2

5

3

4

6



## For all your applications!

The MI range is perfectly suited to industries. The tires, engine power and robustness of the machines are designed for intensive use. Loading and unloading trucks, placing in storage, feeding the production line... MI machines make so many tasks easier.







**RANGE  
MI**

Logistics;  
Industries: metal industry,  
wood, agri-food;  
Distribution of materials,  
Environment...  
and many other  
applications...

**Versatile  
machines**

Manitou industrial trucks are machines that fulfill all your needs, thanks to the numerous options and attachments that you can adapt according to your application.



# Options and attachments selection

## Cabin

From overhead guard to full cabin, MI machines are tailored to your working conditions to ensure your working comfort.

- Overhead guard only
- Complete cabin
- Roof protection
- Heater
- Front screen
- Air-conditioning
- Front and rear screens



## Tyres

MI trucks are fitted as standard with super-elastic tires (SE) to avoid punctures and ensure an optimum service life. You have the option of choosing from several brands or other types of tires:

- Pneumatic for a smoother driving experience.
- Super-elastic non-marking tires for use inside to protect floors.
- Dual wheels at the front for better stability and residual capacity (primarily designed for high capacity trucks).



## Safety

To ensure the safety of drivers and their working environment, the following options are available:

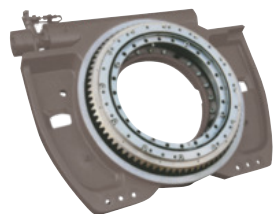
- lights (flashing lights, rotating lights, front and rear working lights, etc.),
- reverse alarm,
- rear view mirrors, etc.



Side-shift



Bale clamp



Rotating carriage



Mono-multi forks

## Attachments

Various attachments are available to meet your different application needs:

- Side-shift & fork positioner
- Bale clamp
- Rotating head
- Mono-multi forks
- ...







## The model that's right for you!

Choose from a wide range of forklifts with lifting capacities from 1.5 to 10 tons and lifting heights from 3 to 6.5 metres. A wide selection of options are available.n.





## Low capacities



**MI 15**

Energy		
Engine power	LPG Diesel	kW (HP)
Capacity		kg
Load centre		mm
Carriage		
Max. lifting height		mm
Turning radius		mm
Length w/o forks		mm

LPG / Diesel
29 (39) 32,8 (44)
1.500
500
FEM 2A
6.500
1.985
2.240



**MI 18**

LPG / Diesel
29 (39) 32,8 (44)
1.800
500
FEM 2A
6.500
2.010
2.280



**MI 20**

LPG / Diesel
35 (47)
2.000
500
FEM 2A
6.500
2.200
2.465



## **MI 25**

LPG / Diesel
35 (47)
2.500
500
FEM 2A
6.500
2.265
2.535



## **MI 30**

LPG / Diesel
35 (47)
3.000
500
FEM 3A
6.500
2.460
2.715



## **MI 35**

LPG / Diesel
35 (47)
3.500
500
FEM 3A
6.500
2.510
2.785





## Medium capacities



**MI 40**

Energy		
Engine power	LPG Diesel (3B / 3A)	kW (HP)
Capacity		kg
Load centre		mm
Carriage		
Max. lifting height		mm
Turning radius		mm
Length w/o forks		mm

LPG / Diesel
74 (99) 55 (74) / 56 (75)
4.000
500
FEM 3A
6.000
2.780
3.070



**MI 45**

LPG / Diesel
74 (99) 55 (74) / 56 (75)
4.500
500
FEM 3A
6.000
2.800
3.110



**MI 50**

LPG / Diesel
74 (99) 55 (74) / 56 (75)
5.000
500
FEM 3A
6.000
2.920
3.255







## High capacities



### ***MI 50L***

Energy		
Engine power	LPG Diesel (3B / 3A)	kW (HP)
Capacity		kg
Load centre		mm
Carriage		
Max. lifting height		mm
Turning radius		mm
Length w/o forks		mm

LPG / Diesel
74 (99) 75 (100) / 74 (99)
5.000
600
FEM 4A
6.000
3.250
3.499



### ***MI 60***

LPG / Diesel
74 (99) 75 (100) / 74 (99)
6.000
600
FEM 4A
6.000
3.300
3.529



### ***MI 70***

LPG / Diesel
74 (99) 75 (100) / 74 (99)
7.000
600
FEM 4A
6.000
3.350
3.604



**MI 80**

Diesel
-
82 (110)
8.000
600
FEM 4A
6.000
3.630
3.895



**MI 100**

Diesel
-
82 (110)
10.000
600
FEM 5A
6.000
3.940
4.242





MAN



## **Manitou is here to help!**

So that you can benefit from an operational forklift all year long, Manitou offers a wide range of products and services that are suited to all your needs.



## **Expertise and service on a daily basis**

Your Manitou dealer can guarantee a complete range of services at all stages of your machine's life and is there to provide support and meet your needs, always looking to provide you with the best solution.

## **1 400 dealers at your service**

The Manitou network is present in more than 120 countries, with over 2,000 expert technicians, specially trained in Manitou technology, who are at your service to assist with everything from purchasing to after-sales.



- **Dealer network**  
A network of experts at your service, whatever your activity (agriculture, construction, industry).
- **Maintenance contracts**  
3 levels of contracts which are tailored to your specific needs: Initial, Advanced, and Excellence. Leave maintenance to your Manitou dealer.
- **Financing**  
Lease or buy? Either way Manitou Finance is there to help you choose the best solution for your projects. Why look elsewhere?
- **Warranty extension**  
With Maniplus, you can extend coverage on your Manitou for up to 5 years.  
Use your machine with full peace of mind.
- **The connected solution**  
Easy Manager is a simple and flexible tool for managing, optimizing and securing the operational monitoring of your machines.
- **Used**  
In the market for second-hand equipment? The Manitou network can help you. Visit [manitou.used.com](http://manitou.used.com), our dedicated reference site for second-hand machines.
- **Genuine spare parts**  
With more than 70,000 parts available, your Manitou dealer never fails to give you expertise and service you need!

Your dealer :



Head office

B.P. 249 - 430 rue de l'Aubinière - 44158 Ancenis Cedex - France

Tél. : 00 33 (0)2 40 09 10 11 - Fax: 00 33 (0)2 40 09 10 97

